

Marlow

The Marlow has an abundance of model sizes developed in response to popular demand. There are two 12ft models, a 13ft x 40ft available as a 2 or 3 bed, and a new size of 14ft x 42ft. The layout is open plan with a central dining position, which allows for the option of a side french door. The sleek low level furniture in the lounge and chunky shelving is minimalistic in style creating a contemporary look.



Image shows 40x13 2 bed



Pemberton Marlow 40 x 13 2 bed shown with standard Seafoam Aluminium Cladding & optional Anthracite Windows & Doors



Kitchen highlights include copious storage, white Shaker style doors, a generous counter top and an integrated microwave. Optional upgrades include an accessory pack with cushions and throws, other kitchen appliances and a lift up storage bed for the master bedroom amongst other items. The decor throughout is tasteful and considered focusing on hints of teal to add a splash of colour. The 40ft and 42ft models now feature a generous dressing table framed with additional storage shelving, and a walk-in robe area with generous hanging space.

Image shows 40x13 2 bed



Highlights

- Open plan living area
- Wall mounted flame effect fire with remote control
- Integrated microwave
- Free standing dining table with velour dining chairs
- L shaped sofa incorporating a sofabed (2 sofas only in the side french layout)
- Accent chair (not in side french layout)
- En-suite to master bedroom (toilet & sink) in some models
- Walk-in wardrobe in some models
- Integrated cooker with separate oven and grill
- En-suite with shower to master bedroom 40ft and 42ft models

36ft x 12ft	1 & 2 bedroom
38ft x 12ft	2 bedroom
40ft x 13ft	2 & 3 bedroom
42ft x 14ft	2 bedroom

Marlow

Residential Specification

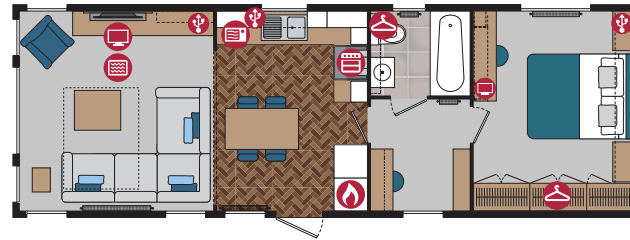
Option includes the following:

- Roof 250mm insulated
- 125mm thick wall
- Floor minimum 120mm insulated
- Windows low E glass and Argon filled
- Superior Insulation U values exceeding the British Standard

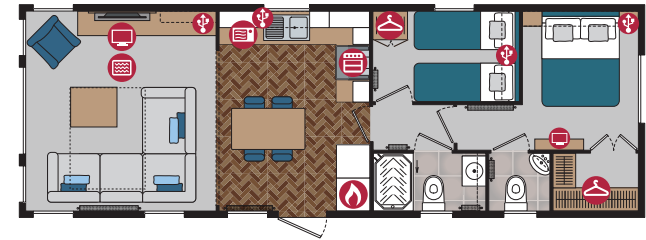
Key

- | | |
|--|---|
|  Cooker |  USB Point |
|  Hob |  TV Space |
|  Fridge-Freezer |  Electric Fire |
|  Microwave |  Patio Doors |
|  Washer/Dryer |  French Doors |
|  Dishwasher |  Bifold Doors |
|  Boiler |  Wardrobe |

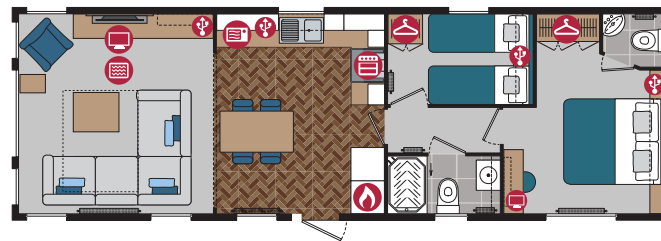
36ft x 12ft - 1 bedroom



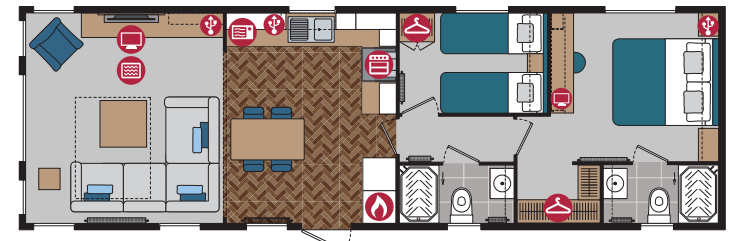
36ft x 12ft - 2 bedroom



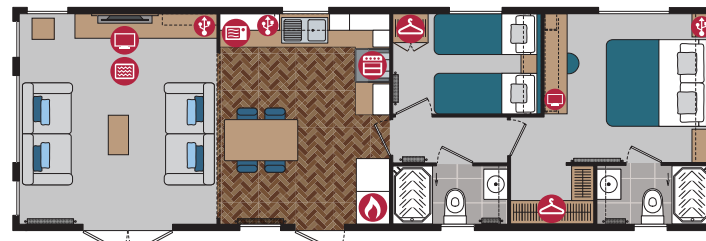
38ft x 12ft - 2 bedroom



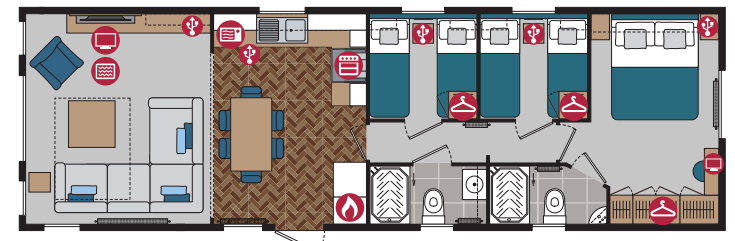
40ft x 13ft - 2 bedroom



40ft x 13ft - 2 bedroom (Side French Doors)



40ft x 13ft - 3 bedroom



42ft x 14ft - 2 bedroom

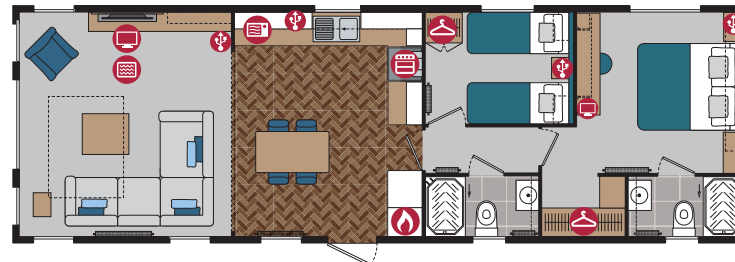




Image shows 40x13 2 bed



Image shows 40x13 2 bed



Image shows 40x13 2 bed

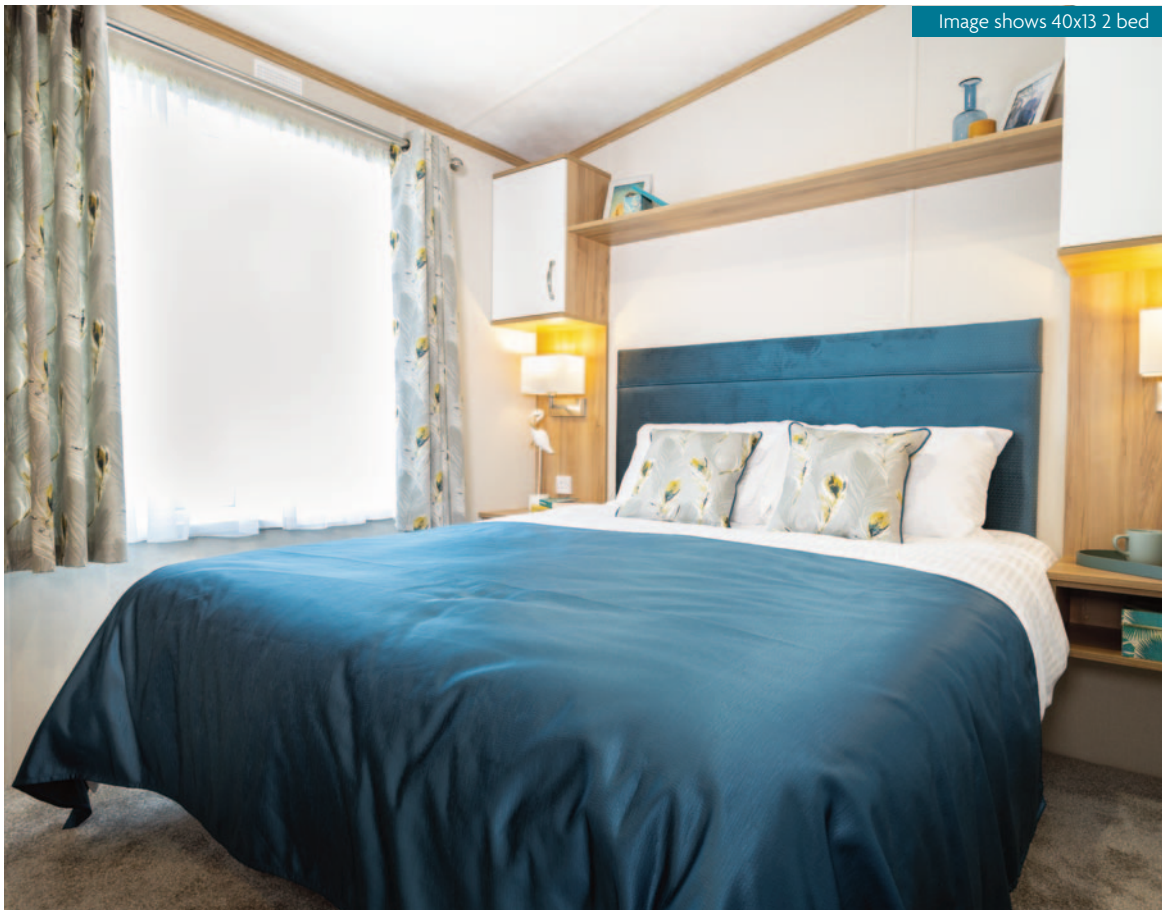


Image shows 40x13 2 bed

Options available to order

- Residential Specification to BS3632 available in all cladding types
- PVCu double glazing
- French doors to front or side elevation
- Gas combi central heating system with thermostatic radiator valves
- Pre-galvanised steel chassis
- Integrated dishwasher and washer dryer (except 36ft and 40ft 3 bed which fits a 600mm wide dishwasher or washing machine)
- Intergrated fridge freezer
- TV points in the twin bedrooms
- Lounge curtains instead of venetians
- Stowaway occasional bed in twin room
- Lounge Scatter Cushions
- Bedroom Throws and Co-ordinating Scatter Cushions
- Duvet Sets
- Marlow Lodge available in Grain Effect Plastic, Canaxel, Stucco & Vinylit Cladding
- Lift up storage bed
- All electric version including central heating
- Platinum upgrade

For further details see standard features checklist on pages 76-77.



Pemberton
PARK & LEISURE HOMES